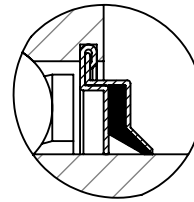
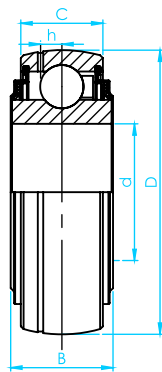


# Tipo - UK-200 - Cargas Normais



Vedação F

## BRM

Ø do Eixo (d)		Rolamento	D mm	B mm	C mm	h mm	Capacidade de Carga	
mm	Pol.						Dinâmica C (N)	Estática Co (N)
25	0,9843	UK205	52	21	17	4,3	14000	7880
30	1,1811	UK206	62	25	19	5	19500	11200
35	1,3780	UK207	72	27	20	5,8	25700	15200
40	1,5748	UK208	80	29	21	6,3	29600	18200
45	1,7717	UK209	85	30	22	6,8	31850	20800
50	1,9685	UK210	90	31	23	6,5	35100	23200
55	2,1654	UK211	100	33	25	7,2	43550	29200
60	2,3622	UK212	110	36	27	8,2	47800	32800
65	2,5591	UK213	120	36	27	8,2	57200	40000
75	2,9528	UK214	130	41	30	9	66000	49500
80	3,1496	UK215	140	44	35	11	83200	63800
85	3,3465	UK216	150	44	35	11	83200	63800
90	3,5433	UK217	160	48	37	12	95900	71500